

# Schroder Syariah Balanced Fund

All data expressed as of 31 January 2012

Fund Category: Balance

<b>Effective Date</b>	22 April 2009						
<b>Effective Statement</b>	S-3083/BL/2009						
<b>Launch Date</b>	11 May 2009						
<b>Currency</b>	Rupiah						
<b>Unit Price (NAV per Unit)</b>	IDR 1,635.65						
<b>Fund Size</b>	IDR 185.08 billion						
<b>Minimum Initial Investment</b>	IDR 200,000 *						
<b>Number of Offered Units</b>	2 Billion Units						
<b>Valuation Period</b>	Daily						
<b>Subscription Fee</b>	Max. 1.50%						
<b>Redemption Fee</b>	Max. 0.50%						
<b>Switching Fee</b>	Max. 0.50%						
<b>Management Fee</b>	Max. 1.50% per annum						
<b>Custodian Bank</b>	Deutsche Bank, Jakarta Branch						
<b>Custodian Fee</b>	Max. 0.25% per annum						
<b>ISIN Code</b>	IDN000081403						
<b>Main Risk Factors</b>	Risk of Deteriorating Economic and Political Conditions. Risk of Decrease In Investment Value. Risk of Liquidity. Risk of Dissolution and Liquidation.						
<b>Risk Return Profile</b>	<table border="1"> <tr> <td>Low risk Potentially Lower Return</td> <td>High Risk Potentially Higher Return</td> </tr> <tr> <td>1</td> <td>2</td> <td>3</td> <td>4</td> </tr> </table>	Low risk Potentially Lower Return	High Risk Potentially Higher Return	1	2	3	4
Low risk Potentially Lower Return	High Risk Potentially Higher Return						
1	2	3	4				

\* not applicable if transaction is made through distribution agent.

## About Schroders

PT. Schroder Investment Management Indonesia ("PT. SIMI") is a 99% owned subsidiary of Schroders Plc. headquartered in the United Kingdom. Schroders started its investment management business in 1926 and managed funds approximately USD 283.9 billion (as of September 2011) for its clients worldwide. PT. SIMI manages funds aggregating IDR 62.42 trillion (as of January 2012) for its retail and institutional clients in Indonesia including pension funds, insurance companies and social foundations.

## Investment Objective

The investment objective of Schroder Syariah Balanced Fund is to provide optimal capital growth through active portfolio management in syariah-compliant equity, Islamic bonds (sukuk) and/or syariah-based money market instrument, including cash.

## Asset Allocation

Syariah-compliant Equity:	5% - 79%
Islamic Bonds (Sukuk):	5% - 79%
Syariah-compliant money market:	5% - 79%

## Portfolio Breakdown

Syariah-compliant Equity:	66.24%
Islamic Bonds (Sukuk):	11.98%
Syariah-compliant money market:	21.78%

## Performance

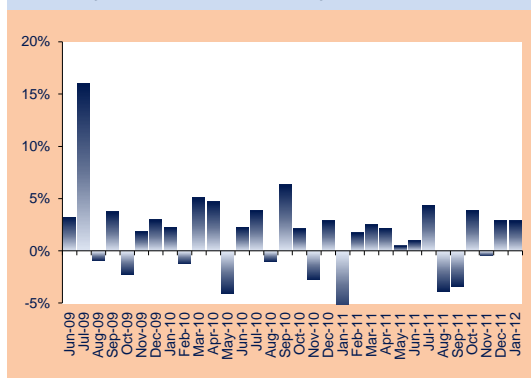
Performance	1 Month	3 Month	6 Month	YTD	1 Year	3 Year	5 Year	Since Inception
Schroder Syariah Balanced Fund	2.86%	5.33%	1.59%	2.86%	14.69%	-	-	63.57%
Benchmark (50%JII+50% ADR Syariah**)	2.51%	3.56%	1.05%	2.51%	11.17%	-	-	44.62%
Best Monthly Return:	16.05% (Jul-09)							
Worst Monthly Return:	-6.55% (Jan-11)							

## Top 10 Holdings

(In Alphabetical Order)

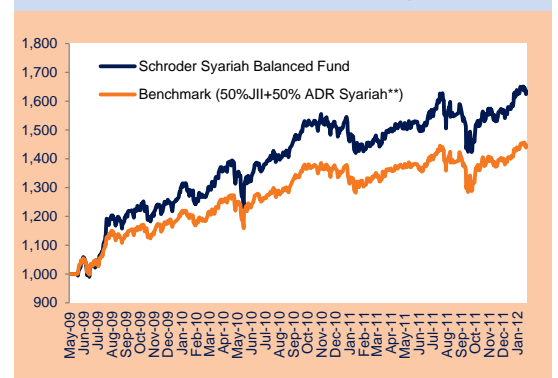
Alam Sutra Realty (Equity)	Semen Gresik (Equity)
Astra International (Equity)	Sukuk Ritel 001
Bank Danamon Syariah (TD)	TB Bukit Asam (Equity)
Bank Permata Syariah (TD)	Telkom (Equity)
Indo Tambangraya (Equity)	Unilever Indonesia (Equity)

## Monthly Returns of Schroder Syariah Balanced Fund



Source: Schroders

## Unit Price Movement since Inception



## Awards

Islamic Finance Award 2010 by KARIM Business Consulting : as The Most Expansive Islamic Balanced Fund  
Investor Award 2010 : as The Best Syariah Fund for category balance fund period 1 year

\*\* ADR Syariah: average return on syariah deposits.

INVESTMENT IN MUTUAL FUND CONTAINS RISKS. PRIOR TO INVESTING IN MUTUAL FUND, INVESTOR MUST READ AND UNDERSTAND THE FUND PROSPECTUS. PAST PERFORMANCE DOES NOT INDICATE FUTURE PERFORMANCE.

This report has been prepared by PT Schroder Investment Management Indonesia for information purpose only. It should not be considered as an offer to sell, or a solicitation of an offer to buy. All reasonable care has been taken to ensure that the information contained herein is not untrue or misleading, but no representation is made as to its accuracy or completeness, no reliance should be placed on it and no liability is accepted for any loss arising from reliance on it. From time to time, PT Schroder Investment Management Indonesia, its affiliated companies and any of its or their officers may have an interest in any transaction, securities or commodities referred to in this report. Also PT Schroder Investment Management Indonesia or its affiliated companies, may perform services, for, or solicit business from, any company referred to in this report. Past performance is not necessarily a guide to future performance, the price of units may go down as well as up and cannot be guaranteed. Investors should read the prospectus before investing.