

Schroder International Selection Fund BRIC (Brazil, Russia, India, China)

A Accumulation Share Class

Fund Launch Date

31 October 2005

Total Fund Size (Million)

USD 3,106.8

Share Price End of Month (USD)

196.46

Total number of holdings

58

Benchmark

MSCI BRIC Net TR

Fund Manager

Allan Conway & Waj Hashmi

Managed fund since

31 October 2005

Historic Yield

0.00 %

Essential Statistics over 3 years

	Fund	Benchmark
Annual Volatility (%)	26.7	27.3
Alpha (%)	-2.0	---
Beta	0.9	---
Information Ratio	-0.6	---
Sharpe Ratio	0.9	1.0
Predicted Tracking Error (%)	3.1	---

The above ratios are based on bid to bid price based performance data over the last 3 years.

Financial Ratios

	Fund	Benchmark
P/Book Value	2.2	1.9
P/E Ratio	12.2	11.9
Predicted P/E Ratio	10.6	10.5
ROE (%)	21.6	20.5
Dividend Yield (%)	2.2	2.5
3 Year Earnings Growth (%)	23.8	20.8

These financial ratios refer to the average of the equity holdings contained in the fund's portfolio and in the benchmark (if mentioned) respectively.

Investment Objective and Policy

To provide capital growth primarily through investment in equity securities of Brazilian, Russian, Indian and Chinese companies.

Risk Considerations

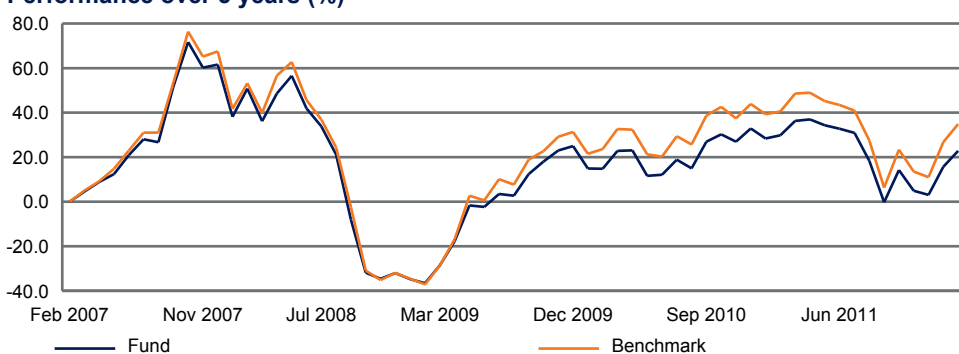
The capital invested is not guaranteed. The fund will frequently make investments using currencies which are different to the fund currency and this may affect the value of the investments and any consequent yields or dividend payments. Investments in equities are subject to market risk and this risk is not hedged. In order to access restricted markets, the fund may invest in structured products, such as fully funded participation notes and warrants, that have no supporting collateral. The use of these products creates counterparty risk and consequent risk of default. The fund may invest in assets that are difficult to sell quickly which may affect the value of the fund and, in extreme conditions, its ability to meet redemption requests upon demand. The fund may invest in assets that are difficult to sell quickly which may affect the value of the fund and, in extreme conditions, its ability to meet redemption requests upon demand. The fund may use financial derivative instruments as part of the investment process. There is no guarantee that they will deliver the expected result.

Performance Analysis

Performance (%)	1 month	3 months	6 months	YTD	1 year	3 years	5 years	Since Launch
Fund	6.1	17.0	3.8	19.1	-5.4	93.8	22.8	96.5
Benchmark	6.4	18.8	5.8	21.5	-4.1	114.7	34.9	123.8

Discrete Yearly Performance (%)	Q4/2010 - Q4/2011	Q4/2009 - Q4/2010	Q4/2008 - Q4/2009	Q4/2007 - Q4/2008	Q4/2006 - Q4/2007
Fund	-22.4	6.3	84.0	-58.0	54.5
Benchmark	-22.8	9.6	93.1	-59.4	58.9

Performance over 5 years (%)



Past performance is not a reliable indicator of future results, prices of shares and the income from them may fall as well as rise and investors may not get back the amount originally invested.

All fund performance data are on a NAV to NAV basis, net income reinvested. Data is not available for the time periods with no % growth stated. In case a share class is created after the fund's launch date, a simulated past performance is used, based upon the performance of an existing share class within the fund, taking into account the difference in the Total Expense Ratio and including the impact of any performance fees if applicable.

Some performance differences between the fund and the benchmark may arise because the fund performance is calculated at a different valuation point from the benchmark.

Source: Schroders

The fund currency may differ from that of your country of residence and the analysis of performance can differ when expressed in different currencies.

For an explanation of the financial terms included in this factsheet visit www.schroders.co.uk/glossary



Morningstar Ratings are sourced from Morningstar.



Schroders

Holdings Analysis

Top 10 Holdings

Holdings	Sector	% NAV
1. China Mobile	Telecommunication services	5.9
2. Gazprom	Energy	5.3
3. Cia Vale do Rio Doce	Materials	4.9
4. China Construction Bank	Financials	4.7
5. CNOOC	Energy	4.7
6. Petrobras	Energy	4.6
7. Industrial & Commercial Bank of China	Financials	4.5
8. Banco Itau	Financials	4.4
9. Banco Bradesco	Financials	3.4
10. Sberbank	Financials	3.3

Overweights	(%)	Underweights	(%)	Market Cap Split	Total	45.7
CNOOC	2.4	PetroChina	-1.8	<500 Million	6.5	
China Mobile	2.2	Bank of China	-1.6	>=500<1000 Million	0.0	
Industrial & Commercial Bank of China	2.0	China Life Insurance	-1.3	>=1000<2000 Million	0.0	
China Construction Bank	1.9	Petrobras	-1.2	>=2000<5000 Million	7.8	
HDFC Bank	1.7	Investimentos Itau	-0.9	>=5000 Million	85.1	
				Unclassified	0.6	

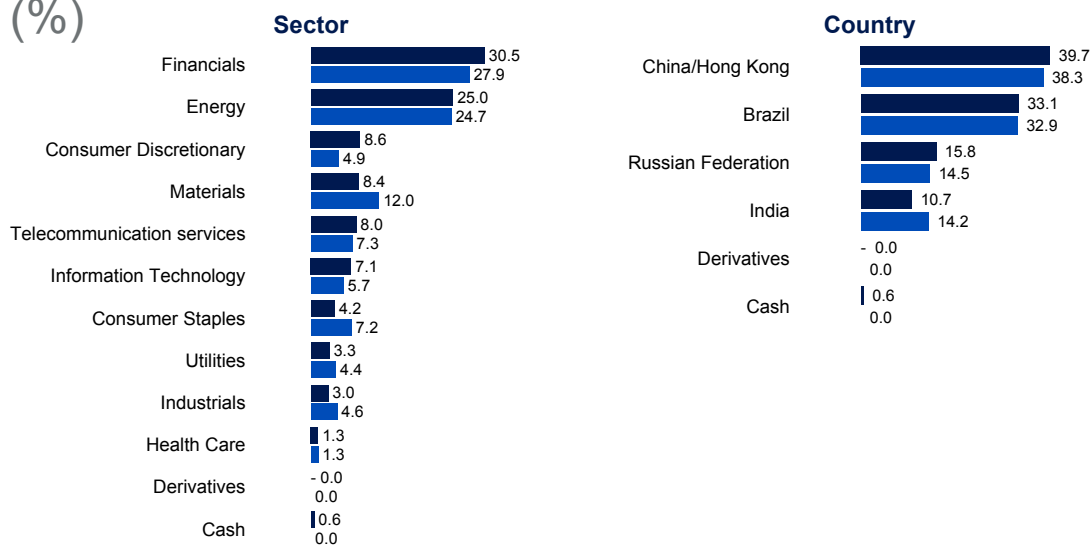
Overweights and underweights data are based on fund's exposure to holdings grouped by name.

Asset Allocation (%)

Fund
Benchmark

The commitment linked to the equity index futures contracts, if present, is deducted from cash.

Source: Schroders



Information

Schroder Investment Management (Luxembourg) S.A.

5, rue Höhenhof
1736 Senningerberg
Luxembourg

Tel.: (352) 341 342 212

Fax: (352) 341 342 342

For your security, all telephone calls are recorded.

	Accumulation
SEDOL	B0JNXM2
Bloomberg	SCHBRAA:LX
Reuters	LU0228659784.LUF
ISIN	LU0228659784
Fund Base Currency	USD
Dealing Frequency	Daily (13:00 CET)
Maximum Initial Fee	5.00 % of gross investment amount
Annual Management Fee	1.50 %
Minimum Investment Amount	EUR 1000 or USD 1000 or their near equivalent in any other freely convertible currency. The minimum subscription amount may be waived at the Directors' discretion.

Third party data is owned or licensed by the data provider and may not be reproduced or extracted and used for any other purpose without the data provider's consent. Third party data is provided without any warranties of any kind. The data provider and issuer of the document shall have no liability in connection with the third party data. The Prospectus and/or www.schroders.com contain additional disclaimers which apply to the third party data.

This document does not constitute an offer to anyone, or a solicitation by anyone, to subscribe for shares of Schroder International Selection Fund (the "Company"). Nothing in this document should be construed as advice and is therefore not a recommendation to buy or sell shares. Subscriptions for shares of the Company can only be made on the basis of its latest prospectus and simplified prospectus together with the latest audited annual report (and subsequent unaudited semi-annual report, if published), copies of which can be obtained, free of charge, from Schroder Investment Management (Luxembourg) S.A. 5, rue Höhenhof, L-1736 Senningerberg, Luxembourg. The Company is a Luxembourg-registered UCITS recognised in the UK under Section 264 of the Financial Services and Markets Act 2000. There will be no right to cancel any agreements to purchase shares under section 6.7 of the UK Financial Services Conduct of Business Sourcebook. All or most of the protection provided by the UK regulatory system does not apply to investments in the Company and compensation will not be available under the UK Financial Services Compensation Scheme.

This document is issued by Schroder Investment Management (Luxembourg) S.A., 5, rue Höhenhof, L-1736 Senningerberg, Luxembourg. Registered No. B 37.799. Approved for issue in the UK by Schroder Investment Management Limited, 31, Gresham Street, London EC2V 7QA. Authorised and regulated by the Financial Services Authority. Schroders has expressed its own views and opinions in this document and these may change.